

GREENING STRATEGY

ENHANCING PALMERSTON NORTH'S BIODIVERSITY
OCTOBER 2006

A joint initiative of the

PALMERSTON NORTH CITY COUNCIL AND THE ENVIRONMENT NETWORK MANAWATU



GREENING STRATEGY

Table of Contents

INTRODUCTION	1
PURPOSE	2
THE STRATEGY AIMS TO:	2
VISION: A GREENER CITY 2025	2
RESPONSIBILITIES	3
THE ROLE OF RANGITAANE O MANAWATU	3
THE COUNCIL'S ROLE	3
OTHERS	4
DEFINITIONS	5
BACKGROUND	6
ECOLOGICAL PROCESSES REPORT	6
GOALS AND OBJECTIVES	7
GOALS AND OBJECTIVES	8
BACKGROUND	8
GOALS:.....	8
1. RESTORATION AND ENHANCEMENT	9
OBJECTIVES.....	9
ACTIONS	10
1.21 INVESTIGATE OPTIONS FOR THE RESTORATION OF THE MANGAONE STREAM.	11
2. CORRIDOR DEVELOPMENT	12
OBJECTIVES.....	12
ACTIONS	13
3. EXPERIENCING THE NATURAL ENVIRONMENT	15
OBJECTIVES.....	15
ACTIONS	16
4. AMENITY AND BEAUTIFICATION	17
OBJECTIVES.....	17
ACTIONS	18
MONITORING	19
MONITORING THE GREENING STRATEGY	19
MONITORING STATE OF THE ENVIRONMENT	19

GREENING STRATEGY
Table of Contents

APPENDIX ONE: RELATED PLANS AND STRATEGIES.....20
APPENDIX TWO: ENVIRONMENT NETWORK MANAWATU - AIM AND OBJECTIVES22
APPENDIX THREE: INTERACTION BETWEEN PALMERSTON NORTH CITY COUNCIL PLANS AND POLICIES23
DIAGRAM ONE: STRATEGIC FRAMEWORK UNDER THE LOCAL GOVERNMENT ACT 200223
APPENDIX FOUR: NATIONAL BIODIVERSITY STRATEGY GOALS24

INTRODUCTION

Greening the City, protecting the City's ecological areas, and improving the associated amenity values and recreational use of these natural areas have been key issues raised by the community. The unifying theme has been a desire to see the City improve its biodiversity and quality of green spaces. This Greening Strategy ties together the different issues and proposes ways of addressing them.

The need for a Greening Strategy for the City emerged from Environment Network Manawatu Inc. (ENM). ENM is an umbrella organisation for the City's environmental groups. A key issue identified by ENM members was the lack of an over-arching strategy to provide direction, co-ordination, and support for the range of activities already happening that contribute to greening the City.

The Palmerston North City Council and ENM agreed to develop the "Greening Strategy" in a partnership approach. This Strategy is the result of combined efforts of the Council and all the member groups of ENM. It was completed over a time period of two years and involved the completion of a broad brush ecological assessment, open days and workshops with private landowners of ecological areas, as well as workshops with community groups and individuals interested in "greening" the City.

This Strategy is a non-regulatory approach to addressing biodiversity issues in the Palmerston North City area, and contributes to both the National Biodiversity Strategy and the Regional Biodiversity Strategy. The Greening Strategy seeks to co-ordinate the diverse range of existing activities, which improve biodiversity, beautify the City, or enhance opportunities to experience the natural environment. While biodiversity is seen as the main focus for this Strategy, it also recognises that recreation and amenity objectives also contribute to greening the City and need to be encompassed in this Strategy.

This Strategy will assist the Palmerston North City Council in achieving sustainable development for the city. The principle of sustainable development, which encompasses economic, environmental, social and cultural spheres, highlights the importance of integration between the plans and policies of Council. (Refer to Appendix 3, which shows the interaction between policies and plans)

A LIST OF CURRENT PROJECTS THAT ARE OCCURRING IN RELATION TO THE GREENING STRATEGY IS AVAILABLE ON THE ENVIRONMENT NETWORK MANAWATU AND PALMERSTON NORTH CITY COUNCIL WEBSITES:

WWW.ENVIRONMENTNETWORK.ORG.NZ

WWW.PNCC.GOV.T.NZ

PURPOSE

THE STRATEGY AIMS TO:

- **Increase the health and extent of native biodiversity in Palmerston North City area.**
- **Increase the extent of greening for amenity purposes in the City – particularly in the urban area.**
- **Improve the range of opportunities for people to experience the natural environment while minimising impacts on that environment**

In developing the strategy a key outcome is expected to be greater communication and co-ordination between Council and community about projects that green the City. The Strategy will be considered successful if it has increased the level of collaborative greening projects both between different community groups and between the Council and other groups.

VISION: A GREENER CITY 2025

By the year 2025 people in the Palmerston North City area are proud of the health and appeal of the local environment, with awareness and respect for its ecological, cultural and spiritual values. The community has an understanding of the concept of biodiversity and accepts the collective responsibility to maintain healthy ecosystems with numerous opportunities to participate in achieving this.

All streets are regarded as liveable extensions of the neighbourhood. They have their own special, tree-lined character, connecting individual properties each with aspects of lowland native bush or compatible exotics to allow native birds to feed throughout the year anywhere in the City. Gardens are developed with the products from compost heaps, wormeries and the use of management practices that recognise the need for long-term sustainability of the environment. The increased indigenous bush areas, which have full protection from animal or plant damage and change of ownership, continue to flourish. They provide enjoyable passive recreation without compromising the health or values of the area. The waterways running within the City boundary have a strong and vibrant mauri or life-force. They are protected in riparian green corridors that extend beyond the City boundary. They maintain a natural bird and fish population that people safely enjoy as they make use of the passive and active recreational opportunities that abound both within and without the urban area. The parks in the Tararua Ranges are popular for locals and tourists, who have come to appreciate the special appeal of the Manawatu.

RESPONSIBILITIES

The Greening Strategy has been developed in a partnership approach between primarily ENM and the Palmerston North City Council, although other groups have contributed to the Greening Strategy content. This partnership approach is essential to ensure the success of the Greening Strategy for the City.

THE ENVIRONMENT NETWORK MANAWATU'S ROLE

ENM is an umbrella organisation for environmental groups in Palmerston North. These groups play a number of roles relating to coordination, promotion; advocacy; education; planning and initiating projects; providing advice to the Council; plantings to restore, commemorate and to beautify; sponsoring Trees for Survival in schools and promoting joint recreational activities. The ENM website acts as an important tool to help coordinate activities and to communicate these to the public. Membership groups can be viewed at the ENM website www.environmentnetwork.org.nz

THE ROLE OF RANGITAANE O MANAWATU

Rangitaane O Manawatu are recognised as 'kaitiaki' and the Mana Whenua or customary guardians of the natural resources of this area.

THE COUNCIL'S ROLE

The Council will incorporate biodiversity considerations into relevant asset management practices and complement this with advocacy and facilitation with landowners and community groups. The Council also plays a role as:

A Regulator: Through the District Plan provisions that relate to cultural and natural heritage. There are ecological sites listed as protected in the District Plan. These have planning provisions relating to management and retention of the sites. It is not proposed through this Strategy to impose any further regulatory provisions on private land.

A Funder: Through the Annual Plan, community groups have the opportunity to apply to the Council for funding and support of environmental initiatives.

A Manager: The City owns and manages assets that have associated biodiversity values.

An Information Provider and Educator: To both private landowners of ecological areas, community groups and interested individuals. This could involve assisting with coordination of information from other relevant organisations.

A Monitor: Through the State of the Environment monitoring process and monitoring of Council plans and policies.

A Creature of Statute: Obligated to implement central government legislation such as the Resource Management Act 1991, Reserves Management Act 1977, and the Local Government Act 2003.

OTHERS

Private landowners have a role to play in the management of ecological areas on private land. As part of the development of the Greening Strategy, consultation with owners of ecological areas was undertaken. This highlighted the main issues facing landowners and enabled the project team to develop appropriate actions to address these issues.

Other organisations have responsibilities that relate to areas within the strategy.

For example:

- Horizons Regional Council – the Manawatu-Wanganui Regional Council plays a role in environmental regulation, providing information and education. It also provides expertise and possible sources of funding for projects relating to the enhancement of biodiversity.
- The Department of Conservation has a key role in providing information and advice for land, water and biodiversity management.
- The Wellington Fish and Game Council has a role in providing information and advice in the restoration of waterways and wetlands.
- Local research and educational institutes have an important role in providing expertise.

Biodiversity doesn't follow political boundaries therefore adjacent territorial authorities have a role in projects that extend beyond the boundaries of the Palmerston North City Council. For example: the "Mountains to the Sea" corridor.

DEFINITIONS

In the aims and goal areas of the Greening Strategy, certain terminology has been used to describe what outcomes the Strategy will achieve. This terminology can be interpreted to have different meanings to different people and to ensure that it is clear what we mean when we refer to these matters, definitions have been provided. These definitions explain what these words mean within the context of this Strategy.

Biodiversity: Biodiversity is short for biological diversity – *“the number and variety of organisms found within a specified geographic region and the variability among living organisms found on the earth; including the variability within and between species and within and between ecosystems. Biodiversity shapes New Zealanders’ national identity, and upholds our economy. As well as that, it has an intrinsic value all of its own.”* (Definition from: *“The New Zealand Biodiversity Strategy”*).

In the context of the Greening Strategy biodiversity relates to both native and exotic biodiversity. While the enhancement and re-establishment of native biodiversity is the primary purpose, exotic biodiversity also contributes to “greening” the City.

Amenity: Refers to aspects of greening the landscape that are not directly related to specific ecological areas. It relates to planting for beautification purposes, non-invasive exotic vegetation, gardens and neighbourhood parks. It may also include the strategic planting of native, or compatible (e.g. bird feeding) species within these environments.

Experiencing the natural environment: This is referring to the opportunities that exist within green areas, for active and passive outdoor recreation and education.

Ecological Area: Refers to a local part of New Zealand where the natural features that make up that landscape (geology, topography, climate, biology and cultural patterns) give rise to a specific character and range of living organisms in that environment that identifies that area’s uniqueness.

BACKGROUND

ECOLOGICAL PROCESSES REPORT

One of the early themes that emerged from preliminary workshops that the Environment Network Manawatu hosted in July 2001 was that there seemed to be a lack of basic information about ecological processes and ecological areas in the City. The absence of this information was making it difficult to agree on priorities and identify new opportunities to green the City.

In response to this issue Palmerston North City Council commissioned Boffa Miskell in November 2001 to undertake a broadbrush ecological assessment. The main findings of this assessment are:

- A total of 80 ecological areas are identified – representing between 12 – 15% of the total area of the City.
- The total area is heavily dominated by large areas in the northern Tararua Range (around 93% of all ecological areas) and without these areas the total area of ecological areas would be less than 1% of the total City area.
- The majority of ecological areas are forest (44%), followed by scrub and shrubland (27%) and wetland (12%).
- The number and size of remaining ecological areas shows clearly the pattern and extent of habitat loss in the City.
- The parks and reserves network is of key importance to the ecological restoration in the City.

The report (Boffa Miskell: “Ecological Processes in Palmerston North City,” May 2002) also makes a number of recommendations in relation to the development of a Greening Strategy and the management of Council owned parks and reserves.

Ecological Processes Report – Summary of Recommendations:

1. Restoration Strategies:

- Develop a generic reserves ecological management plan.
- Investigate “mountains to city” corridor with integrated walkways development
- Management plans to integrate animal and plant pest priorities, with Horizons Regional Council, paying particular attention to protecting the Turitea and northern rata habitats.
- Gordon Kear forest to be managed in support of its biodiversity and ecological values. *(Note that the inclusion of Woodpecker Block as an outdoor recreation resource adds a new dimension to this, which now has to be considered in the future planning of the area).*
- Develop a priority list for corridor restoration in the floodplain on the Manawatu River in collaboration with the Manawatu District Council.
- Pay special attention to all depleted eco-domains (river/stream beds, wetland habitats) for restoration.

2. Policy development and guidelines to protect ecological areas against fragmentation and work towards a desired environmental vision.

3. Develop landscape management guidelines to protect both urban and rural distinctive values.

4. Undertake systematic monitoring and assessment of current ecological values and states to provide an accurate database for further action.

GOALS AND OBJECTIVES

BACKGROUND

A number of workshops were held with various members of the community interested in greening Palmerston North City. A range of ideas regarding how increased greening of the Palmerston North City area could be achieved were put forward. These tended to fall into four main themes:

- Restoration and enhancement of ecological areas in the City, restoration of areas that used to be ecological areas and enhancement of existing areas.
- Corridor development: corridors are connections between places and spaces. Corridor development relates to all types of corridors – waterways, roads, tracks for walking and cycling and corridors that link key ecological areas.
- Amenity and beautification through planting
- Opportunities to experience the natural environment

These four themes embody the aims of the Greening Strategy. From these themes discussions around development of clear objectives, strategies and actions were held.

GOALS:

1. **Restoration and enhancement:** To increase the health and extent of native biodiversity.
2. **Corridor development:** To develop an interlinking network of corridors throughout the City area that connect key places and spaces.
3. **Experiencing the natural environment:** Improve the range of opportunities to experience the natural environment while minimising impacts.
4. **Amenity and beautification:** To enhance the amenity of the City by increasing planting in order to create “green” cityscapes.

Note: It is important to refer to the context associated with each goal area as this provides an explanation for the goal and objectives.

EXPLANATION

Goals: are statements of what we want to achieve

Objectives: are strategic statements of how we are going to achieve the goal, and

Actions: are specific tasks that relate to the strategies.

1. RESTORATION AND ENHANCEMENT

GOAL: To increase the health and extent of native biodiversity in Palmerston North City area.

OBJECTIVES

- Identification and prioritisation of key ecological areas and opportunities for restoration particularly wetlands, waterways and bush remnants.
- Work with owners of Ecological Areas to encourage improved management of existing areas.
- To support the practice of ecosourcing native seedlings to maintain and develop Ecological Areas
- To promote the full range of benefits associated with increasing biodiversity through restoration.
- To develop projects with Iwi to protect, enhance and restore areas of significance.

CONTEXT

- 1.1** As part of the background work to the development of the Greening Strategy the Council commissioned an ecological assessment of the Palmerston North area. This highlighted that there are few formally protected areas outside of the hill country in Palmerston North, with the significant exception of the City's reserve network. This means that the Palmerston North City reserves are by far the most important components of Palmerston North's protected ecological areas.
- 1.2** There is a range of ideas both within Council and in the community with regard to the development of areas of Council land in line with the Greening Strategy principles. Not all of these ideas can be resourced or funded by the Council, there may be opportunities to establish partnership agreements with other groups to pursue these ideas and achieve greater "greening" of the City.
- 1.3** Rangitaane O Manawatu have signaled in their Waitangi Tribunal claims an interest in the shared management of key historical and cultural sites. The Greening Strategy will provide opportunities for partnerships with Iwi to progress other restoration and enhancement projects.
- 1.4** Work has been undertaken in the preparation of this strategy with landowners of ecological areas to identify the major issues that face them in managing their areas. The first tier of issues related to needing assistance with pest and weed management, the establishment of a community / commercial nurseries that provide eco-sourced seedlings or plants and assistance with fencing through provision of materials, labour or funding. Some of the issues identified by landowners provide opportunities for community / environmental groups to assist, seeking to draw these two groups together can effectively match up "projects with groups".
- 1.5** To ensure that a non-regulatory approach to retention and enhancement of ecological areas is successful, the importance of those areas needs to be communicated to private landowners.

ACTIONS

- | | | |
|-------------|--|----------|
| 1.1 | Investigate the establishment of an incentives strategy for owners of ecological areas. | PNCC |
| 1.2 | Promote opportunities for community / landowners to monitor aspects of biodiversity. | PNCC |
| 1.3 | Continued planting of Aokautere drainage reserves | PNCC |
| 1.4 | Development of an ecological management plan for open space areas managed by the Council | PNCC |
| 1.5 | Develop a policy of rates remission on land protected for natural conservation purposes. | PNCC |
| 1.6 | Identify methods for providing assistance with pests and weeds and fencing to landowners of ecological areas. | PNCC |
| 1.7 | Implement the Turitea Reserve Management Plan actions | PNCC |
| 1.8 | Enter into discussions with key parties regarding opportunities to progress recommendations under the Ecological processes report – May 2002 (pest and weed management review / monitoring programme development). | PNCC |
| 1.9 | Development of biodiversity indicators and monitoring with the state of the environment programme | PNCC |
| 1.10 | Communicate operational level plans on sites identified as significant to Iwi. | PNCC |
| 1.11 | Progress the restoration and enhancement of the Otira Park. | PNCC/ENM |
| 1.12 | To investigate methods of managing effects of residential development (particularly domestic pets) adjacent to ecological areas. | PNCC/ENM |
| 1.13 | Development of environmental education material on biodiversity such as the value, benefits and responsibilities as owners or neighbours to ecological areas. | PNCC/ENM |
| 1.14 | Identify and develop relationships with landowners who are interested in partnerships with the community. | PNCC/ENM |
| 1.15 | Investigate ways of involving community groups or interested members of the public in pest and weed management. | ENM |
| 1.16 | Continued restoration and extension of Keeble's Bush and wetland | ENM |
| 1.17 | Eco-sourcing training and workshops | ENM |
| 1.18 | Development of a planting guide to assist with eco-sourcing. | ENM |

- | | | |
|-------------|---|-----|
| 1.19 | Continued restoration of Waitoetoe Park | ENM |
| 1.20 | Encourage neighbourhood and landowner restoration projects e.g. Springdale Grove Park | ENM |
| 1.21 | Investigate options for the restoration of the Mangaone Stream. | ENM |

2. CORRIDOR DEVELOPMENT

GOAL: To develop an interlinking network of corridors throughout the City that connects key places and spaces.

OBJECTIVES

- Identification and development of ecologically functional networks of corridors that link key terrestrial or aquatic ecological areas throughout the city boundary.
- Development of multi purpose corridors.
- Identification and development of urban corridors utilising the roading network and urban green spaces for linkages.
- Development of pathways that provide for cultural and spiritual purposes to enhance mauri or life force.

CONTEXT

- 1 Corridor development is the term given to a range of initiatives that essentially create connections between spaces and places. This strategy envisages that there will be different types of corridors developed for different purposes, but all contribute to “greening” the City. Corridors to be developed will link ecological areas, providing a pathway for birds and animals. Pathways for walking, cycling and horse riding provide opportunities for planting and enhancement of areas such as riversides. An example of an ecological corridor would be linking the Manawatu Gorge to Turitea Water Catchment Reserve to the Tararua Ranges (Gordon Kear Forest) for ecological purposes. An example of a multi purpose corridor would be linking Ashhurst to Palmerston North via a walk / cycle way adjacent to the Manawatu River.
- 2 In 1999 the Green Corridors Group was formed with a vision of creating a network of “green corridors” that support biodiversity and extend both the City’s existing heritage planting and its public parks and green space. The Group’s first project is the development of the Turitea Stream Green Corridor, a corridor that is to extend from the entrance of City’s water reservoir to where the Stream joins the Manawatu River – approximately 12 kilometres. The Turitea Stream Green Corridor project is an attempt to restore a Manawatu lowland ecosystem and is a partnership between the Council, community groups and landowners. This project provides an example of how community and Council can work with private landowners to achieve positive outcomes.
- 3 It is important to recognise that there are a range of community groups and organisations associated with the development of corridors – not all are mentioned in the actions list. It will be important within the detailed planning and development of corridors that key partnerships between groups with similar project objectives (both within Environment Network Manawatu and outside it) are established. Many of the possible corridors could connect with areas outside of the City boundary. Developing partnerships with the surrounding territorial authorities and Iwi will be an important process for the long-term biodiversity of the Manawatu area.
- 4 It is expected that in the future the multi purpose corridors will provide a low energy / low impact pathway for moving around the City and will be used increasingly for this purpose as traditional non-renewable energy sources diminish.

ACTIONS

2.1	Maintenance of the existing walkway systems	PNCC
2.2	On-going support of Green Corridors Group	PNCC
2.3	Continue street tree planting programme – on-going	PNCC
2.4	Development of an urban planting guide	PNCC/ENM
2.5	Development of a long-term street tree planting strategy to ensure consistent approach across the City	PNCC/ENM
2.6	Identify and map opportunities for development of multi purpose corridors:	PNCC/ENM
	<ul style="list-style-type: none">- Connecting and establishing Summerhill parks to develop a walkway to complete the circuit to Turitea Walkway & Anzac Park- Investigate the feasibility of continuing the Buick Park/Panieri Park walkway along Manawatu River to meeting Mangaone Stream- To progress a pathway from Riverside Walkway in City to Ashhurst Bridge- Planted walkway along Mangaone Stream – Kawau Stream- Investigate separate cycle ways away from streets/roads- Provision of suitable facilities at walkways including parking and signage- Continue maintenance of Otira Park walkway- Negotiate combined and separate pathways in the Gordon Kear Forest- Investigate Mountains to Sea corridor	
2.7	Completion of the Turitea green corridor	PNCC/ENM
2.8	Identify and map opportunities for development of networks linking ecological areas particularly native bush areas, wetlands, rivers, streams	PNCC/ENM
2.9	Development of a Green Corridors model resource kit	PNCC/ENM

2.10	Community monitoring of bird movement in relation to corridor areas	ENM
2.11	Supporting landowner efforts to extend bush remnants in important ecological corridors	PNCC/ENM
2.12	Investigate the feasibility of developing a green corridor along the steep terrace that runs from Palmerston North to Ashhurst along the railway lines	ENM
2.13	Advocate to Transit New Zealand for pedestrian and cycle provision on the two bridges at either end of the Manawatu Gorge.	ENM
2.14	Continue development of Keebles Bush Corridor along Maungatanga Stream	ENM

Note: This goal has linkages with the restoration and amenity goals.

3. EXPERIENCING THE NATURAL ENVIRONMENT

GOAL: Improve the range of opportunities to experience the natural environment while minimising impacts.

OBJECTIVES

- To encourage and support the development of projects compatible with the Greening Strategy aims identified in the Outdoor Recreation Strategy
 - Consolidation of existing track development e.g. Kahuterawa, Harding's Park, Gordon Kear Forest.
 - To enhance access at key points along Manawatu River
 - To develop an increased range of road end and picnic facilities to set the scene for controlled natural environment experiences.
 - To assist effectiveness and efficiency of outdoor recreational use through education and publicity.
- To develop opportunities for active participation in improving the natural environment.
- To provide for an outdoor recreational experience while ensuring protection of significant ecological and cultural values.

CONTEXT

- 1.1** Palmerston North City Council adopted the Outdoor Recreation Strategy in 2002. This strategy represents the basic means by which the Palmerston North City Council will determine its priorities and guidelines for the provision of outdoor recreation services within the City. The strategy identifies the five areas that are considered to be a priority for the Council and were identified through consultation and desktop research. These are:
- Establishment of an outdoor recreation hub in the Kahuterawa Valley;
 - Tracks;
 - River access;
 - Enhanced road end and picnic facilities; and
 - Improved information about recreational opportunities
- 1.2** Development of Council's reserves and improved access to these reserves and the Manawatu River were consistent themes from consultation associated with the development of the Greening Strategy. It is recognised that development of Council's reserves for outdoor recreation provided opportunities for "greening" to occur. There is an annual programme of works to improve access to council facilities for persons with disabilities.
- 1.3** There are a range of actions associated with the other theme areas of the Greening Strategy that provide opportunities for active participation in improving the natural environment. Therefore if the Greening Strategy is successful in motivating action in those areas, it will also be successful in achieving this objective.

ACTIONS

3.1	Development of a reserve management plan for the Esplanade	PNCC
3.2	Development of a generic reserves management plan. The development of this plan to consider among other matters: <ul style="list-style-type: none">- The appropriate management of areas of ecological and cultural value- The involvement of Iwi in the selection of name for reserves	PNCC
3.3	Implementation of the Reserves Management Plan for the Turitea Water Catchment Reserve.	PNCC
3.4	Implementation of actions associated with the Outdoor Recreation Strategy that promote greening.	PNCC
3.5	Undertake annual programmed work to improve access to council facilities for persons with disabilities	PNCC
3.6	Provision of education on reducing pests and weeds introduced to reserves via visitors.	PNCC/ENM
3.7	Development of interpretation / education of public users of reserves and key points along the Manawatu River - that promotes biodiversity. (Working in with the Outdoor Recreation Strategy objectives)	PNCC/ENM
3.8	Planting roading and picnic facilities for shade	PNCC/ENM
3.9	Promoting composting toilets	ENM
3.10	Adopt-an-area partnerships with ENM and community	ENM
3.11	Set up a volunteer network database of active projects	ENM
3.12	To monitor recreational use of facilities in and adjacent to areas of ecological and cultural value and advocate to the council on appropriate management principles.	ENM

4. AMENITY AND BEAUTIFICATION

GOAL: To enhance the amenity of the City through increasing planting in order to create “green” cityscapes.

OBJECTIVES

- To encourage residents to value their gardens and properties as a source of greening and city biodiversity.
- To encourage, through design guidelines, the integration of greening into residential, commercial and industrial development.
- To continue maintenance and planting of public open space areas.
- To incorporate greening into the urban streetscape

CONTEXT

1. While biodiversity is seen as the main focus for the Greening Strategy it is recognised that amenity and beautification projects also contribute to greening the city.
2. Within the context of the Greening Strategy, amenity is used when referring to aspects of greening that are not for specific ecological areas. This relates to planting for beautification purposes, exotic vegetation, gardens and neighbourhood parks. For example, incorporation of planting into the urban streetscape can contribute to amenity through the planting of roundabouts and traffic islands.
3. Increasing the aesthetic attractiveness of the environment brings people to an area, retains residents and increases land value. It may also increase the incentive for foot traffic to move between home and school or place of activity.

ACTIONS

4.1	Continuation of street tree planting programme	PNCC
4.2	Development of non-regulatory/regulatory design guides relating to integrating greening into residential, commercial and industrial development	PNCC
4.3	Identification of opportunities for greening with the urban streetscape	PNCC
4.4	On-going support for Manawatu Tree Trust	PNCC
4.5	Develop partnerships to plant park areas	PNCC/ENM
4.6	Landscaping entrances to the City including Ashhurst entrances	PNCC/ENM
4.7	Identification and provision of information and education about beneficial and complementary exotic plantings	ENM
4.8	To investigate initiating community action groups to work with the Council to adopt a neighbourhood park	ENM
4.9	Monitor and advocate for a more reasonable level of permeable to impermeable space in the urban area	ENM

MONITORING

Monitoring relating to the Greening Strategy will be split into two distinct areas:

MONITORING THE GREENING STRATEGY

Annually: Reports will separately detail the tangible movement towards achieving the Goals and Actions within the strategy, provide a record of work undertaken for that year and make recommendations as to further work or changes in direction. It is recommended reports are prepared by the Environment Network Coordinator and Palmerston City Council staff and presented to both the Palmerston North City Council and the Environment Network Manawatu.

Five Yearly: In 2008/09 financial year a review of the Goals, Objectives and Actions be undertaken in order to provide the opportunity to identify any changes in direction from external influences and identify areas of concern.

MONITORING STATE OF THE ENVIRONMENT

The Palmerston North City Council undertakes regular monitoring of the environment, aspects of which will be impacted on by the implementation of the Greening Strategy. Changes in biodiversity will be monitored through indicators and reported through the State of the Environment Monitoring Report in five yearly cycles.

ENM groups will develop indicators to undertake separate annual monitoring of environmental projects as well as some ecological sites. This information will feed into creating a picture of changes over time as captured in the State of the Environment report.

APPENDIX ONE: RELATED PLANS AND STRATEGIES

The following information outlines the key plans, policies and relevant documents that the Greening Strategy relates to and aligns with.

POLICY

KEY STATEMENTS

Community Outcomes

The Local Government Act 2002 (LGA) provides a clear statement of purpose – “to promote the well-being of your community in the present and for the future” and provides for local authorities to play a broad role in promoting the **social, economic, environmental and cultural well-being** of their communities. Under the LGA, the Council is required to facilitate a process of identifying community outcomes, which will focus on the well-being of the community as a whole. The community outcomes will then set the framework for the Long Term Council Community Plan (LTCCP), discussed below.

(LTCCP)

Long Term Council Community Plan

The LTCCP is the document that sets out the local authority priorities over the medium to longer term and has been established through the LGA 2002. It sets out how the local authority itself intends to contribute to community well-being over the life of the plan. The LTCCP is to provide a basis for accountability of the local authority to the community. Essentially the LTCCP combines the Long Term Financial Strategy (LTFS) and the Annual Plan process and covers a period of at least 10 years. The intent of the LTCCP is that it provides the strategic framework within which the Council operates, all of the Council's other plans and strategies should be recognised in the LTCCP. Because the LTCCP will contain the priorities identified by the community and identifies where and how the local authority contributes to these, it is expected that the other plans and strategies will align themselves with the outcomes and therefore the LTCCP.

The 2004/5-2013/14 LTCCP identifies six community outcomes which specify the outcomes or results at the City level that the Council will work towards. The community outcomes that are of relevance to the Greening Strategy include “A Well Managed Physical Environment”, “A Liveable Urban Environment”, “An Active Community”, and “An Effective and Responsible Council”.

- Natural and Built Environment Policy** The Natural and Built Environment Policy has a section on biodiversity and has an outcome statement that follows the intent of Council's role in the Greening Strategy. A range of actions are outlined in this Policy that are complementary with the Greening Strategy actions.
- District Plan** The District Plan lists 15 ecological areas as Indigenous Bush Remnants. These areas have planning provisions relating to their protection and management. The relevant objective and policies relate to ensuring that areas of significant indigenous vegetation and fauna are appropriately protected, and are identified and scheduled in the District Plan following the set criteria.
- Environmental Education Strategy** The aims of the Environmental Education Strategy relate to raising awareness and concern of the state of the environment in the City, encouraging integration and coordination of activities, developing partnerships between the City Council and other organisations, and promoting and increasing the level of environmental education in the city. Within the implementation section of the Strategy environmental themes are outlined. Biodiversity is listed as one of those themes with relevant messages that could be developed into education packages.
- Transportation Management Plan** The Transportation Management Plan describes the policies and provisions needed to provide for the present and expected traffic, roading and transportation needs of Palmerston North through the course of the coming two decades in an efficient and sustainable manner. Its preparation has involved detailed technical investigations and assessment of options together with an extensive public consultation programme.

APPENDIX TWO: ENVIRONMENT NETWORK MANAWATU - AIM AND OBJECTIVES

Aim: To promote a network of collective community action to realise a vision of an enhanced Manawatu environment.

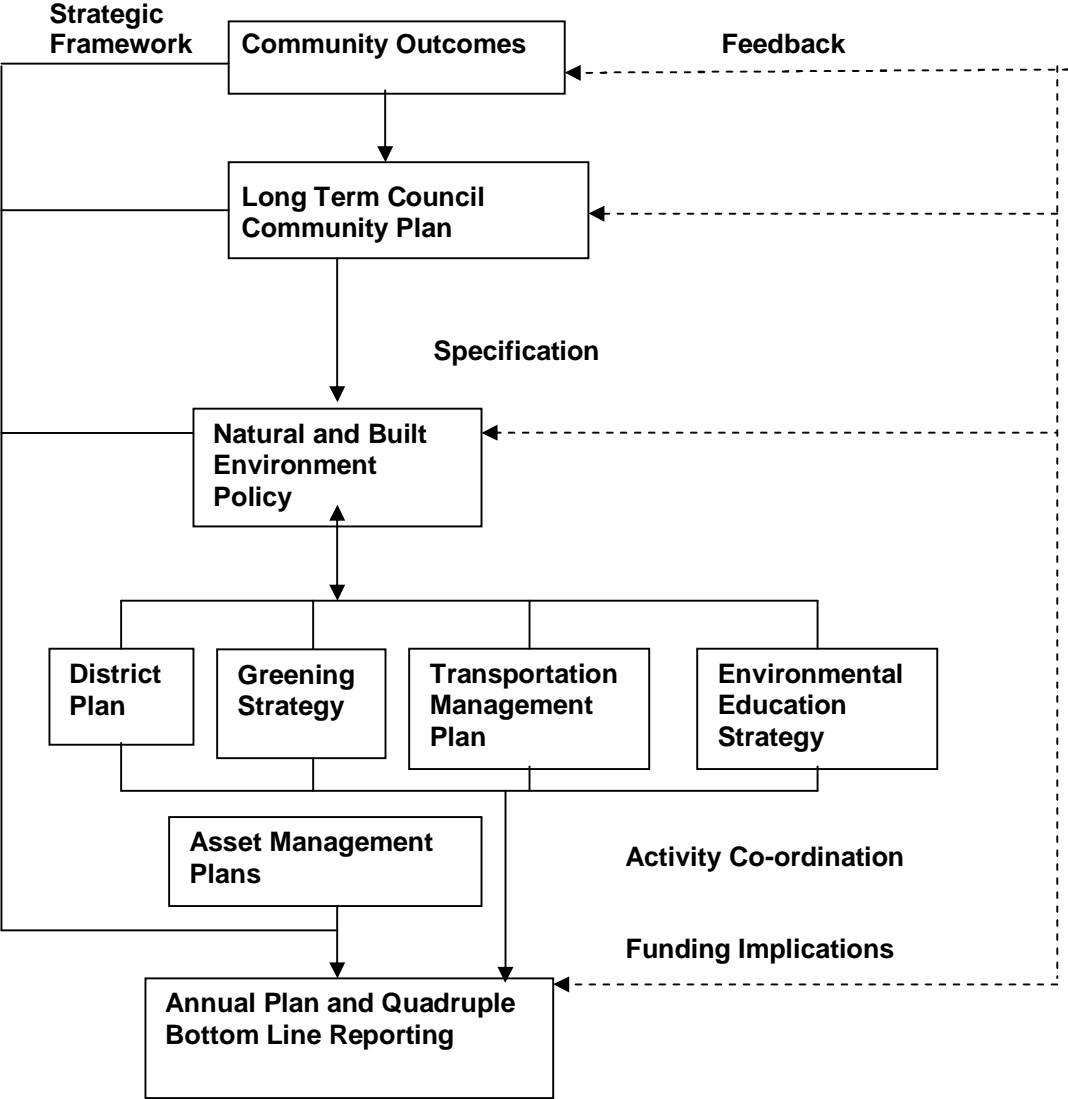
Objectives:

The ENM will:

- Coordinate and communicate the efforts of the membership to:
 - actively protect, maintain, restore and enhance the environment of the Manawatu;
 - promote ideas to the wider community to encourage them to participate in environmental projects;
 - develop concerted long-term plans of action to enhance the environment and actively progress the implementation of these plans;
 - encourage the provision of “green” areas for passive recreation;
 - work together to identify, initiate, support, implement and maintain environmental projects that benefit the wider community;
 - develop, implement and participate in environmental education initiatives;
- Advocate for ecological sustainability and matters of agreed environmental significance;
- Act as a central point of access to environmental information;
- Liaise with similar organisations elsewhere in New Zealand and around the world as appropriate, to source and share ideas for environmental projects and issues;
- Work in partnership with Iwi to recognise kaitiakitanga and common environmental aims and objectives;

APPENDIX THREE: INTERACTION BETWEEN PALMERSTON NORTH CITY COUNCIL PLANS AND POLICIES

DIAGRAM ONE: STRATEGIC FRAMEWORK UNDER THE LOCAL GOVERNMENT ACT 2002



APPENDIX FOUR: NATIONAL BIODIVERSITY STRATEGY GOALS

The National Biodiversity Strategy's vision describes a future in which all New Zealanders contribute to sustaining the full range of indigenous biodiversity and share in its benefits.

Four goals are established for conserving and sustainably managing New Zealand's biodiversity:

Goal One: Community and individual action, responsibility and benefits

Enhance community and individual understanding about biodiversity, and inform, motivate and support widespread and coordinated community action to conserve and sustainably use biodiversity; and

Enable communities and individuals to equitably share responsibility for, and benefits from, conserving and sustainably using New Zealand's biodiversity, including the benefits from the use of indigenous genetic resources.

Goal Two: Treaty of Waitangi

Actively protect iwi and hapu interests in indigenous biodiversity, and build and strengthen partnerships between government agencies and iwi and hapu in conserving and sustainably using indigenous biodiversity.

Goal Three: Halt the decline in New Zealand's indigenous biodiversity

Maintain and restore a full range of remaining natural habitats and ecosystems to a healthy functioning state, enhance critically scarce habitats, and sustain the more modified ecosystems in production and urban environments; and do what else is necessary to

Maintain and restore viable populations of all indigenous species and subspecies across their natural range and maintain their genetic diversity.

Goal Four: Genetic resources of introduced species

Maintain the genetic resources of introduced species that are important for economic, biological and cultural reasons by conserving their genetic diversity.

(Source: www.biodiversity.govt.nz)